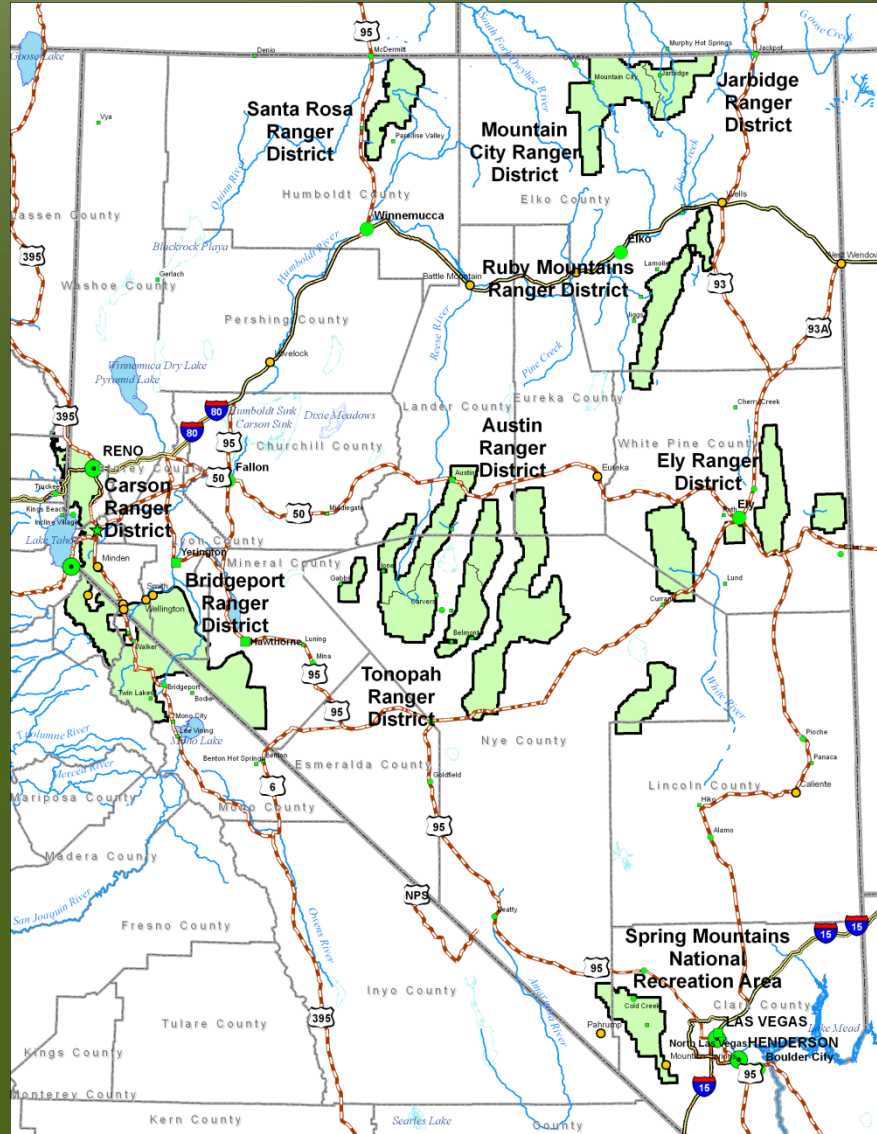


Humboldt-Toiyabe National Forest



Wild Horse & Burro Update

09/14/2017



Humboldt-Toiyabe National Forest

District	Territory	AML	Current Population	Last Survey	% of AML
Bridgeport	POWELL MOUNTAIN	29 Horses	36 Horses	2015	124%
Austin	BUTLER BASIN	60-100 Horses	191 Horses**	2017	191%
Austin	DOBBIN SUMMIT	1-3 Horses*	0 Horses**	2017	0%
Austin	HICKISON	16 Burros	95 Burros**	2017	594%
Austin	KELLY CREEK	8-16 Horses*	13 Horses**	2017	81%
Austin	NORTHUMBERLAND	12 Horses	8 Horses**	2017	67%
Tonopah	LITTLE FISH LAKE	80-93 Horses*	163 Horses**	2017	175%
Tonopah	MONITOR	51-90 Horses*	181 Horses**	2017	201%
Tonopah	SEVEN MILE	1-3 Horses*	0 Horses**	2017	0%
Tonopah	STONE CABIN	1-3 Horses*	0 Horses*	2017	0%
Tonopah	TOQUIMA	15-30 Horses*	148 Horses**	2017	493%
Spring Mountains	JOHNNIE	0-3 Horses/ 14-34 Burros	81 Horses/ 75 Burros	2015	422%
Spring Mountains	RED ROCK	0-3 Horses/ 0-3 Burros	78 Horses/ 1 Burro	2015	1317%
Spring Mountains	SPRING MOUNTAIN	47-66 Horses/ 20-35 Burros	302 Horses/ 9 Burros	2015	308%
Ruby Mountains	CHERRY SPRING	40-68 Horses	53 Horses	2016	78%
Ely	MONTE CRISTO	72-96 Horses	85 Horses	2016	89%
		703 Total	1519 Total		216%
		*No AML Established. # presented here is estimate of proper number	**Data from the 2017 surveys is still being analyzed. Numbers shown here are from previous surveys.		

Wild Horse & Burro Update

09/14/2017



Humboldt-Toiyabe National Forest

- Environmental analyses/decisions/AML determination for the Hickison Wild Burro and Spring Mountains Wild Horse Territory Management Plans should be completed in early 2018
- Goal to finalize all territory plans by 2020
- Finalizing management plans is required to implement population management actions
- Working with Ft. McDermitt Tribe, BIA and BLM to remove tribal horses from Santa Rosa Mountains in 2018

Wild Horse & Burro Update

09/14/2017

